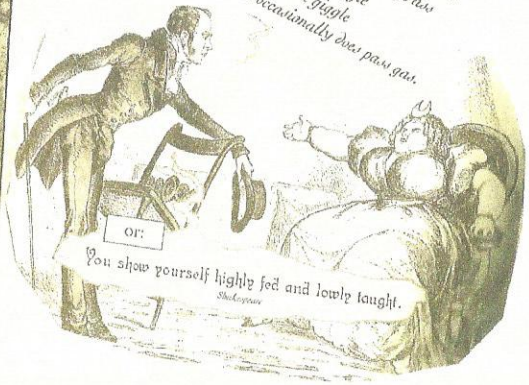


Zounds, I have been bethumped by words.

Shakespeare



There once was a woman from Mass
Who had an enormously large ass
when asked does it wiggle
she replied with a giggle
No, but it occasionally does pass gas.



or:

You show yourself lighty feet and lowly tought.

Shakespeare

Choosing Equivalents for Very **Bad** Words



Choosing Equivalents for Very **Bad** Words 3 instructor led CIMCE credits

I. A Chip (or more) on one's shoulder

A. Four letter words

A The "F", "C", "P" and "H"
words

B. Insult to injury terminology

Insulting men

Insulting women

Cowardice

C. Gesture insults

II. Racial slurs or hate speech

Racial, religious and sexual
orientation slurs

III. Sexual Innuendo

IV. A few bricks shy of a load

Cerebrally Challenged

The mad natter

V. 54 Exercises

Example of in class presentation and participation:

- **5. The "H" word: Hell**

1. Sticky wicket, Hades, Hail Columbia, _____, _____, tarnation, Sam Hill, Kingdom Come, You Know Where, hot place, netherworld, lower regions.
2. Victorians gave us _____, perdition, and Go to Hellen B. Happy (no longer used today.)
3. Other sources suggest the word "heck" goes back to the _____ several centuries ago, deriving from (h)eck! And expression of _____, or possible from the Lancashire oath: go to ecky, meaning "go to hell."
4. Hellacious means either: _____
5. Hell afloat were old ships not good for sailing used by the _____ as concentration camps during the Revolutionary War.
6. To hell or Connaught an Irish phrase from when the Irish were dispossessed by _____ and ordered to settle in Connaught or put to death.

Example of exercises:

- **18. A Harvey Smith** is an insulting gesture equivalent with _____ used mostly in the English speaking countries. True or false, if false put the meaning here _____
- 44. An eccentric is a rich _____
- **45. Barmy, unzipped, bonkers, cracked, loony, flaky, fruity, and wacky** suggests insanity. True or false, if false put the meaning here _____
- 46. What is the meaning suggested by the following words: **brickbats, carping, cavil, censure, disparagement, reproof, stricture, vitriol, and vituperation:** _____
- **47. A few peas short of a casserole** has the same meaning as **all foam, no root beer**, namely _____
- **48. The Clinton Exculpation** refers to the extenuating circumstances found in the impeachment of President Bill Clinton over the Monica Lewinsky affair. True or false, if false please provide the meaning here _____
- **49. Piss-poor** is equivalent to **pissing match**. True or false, if false please provide the meaning here _____